

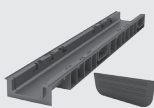


- Surface drainage systems
- Lawn grates
- Modular sport and protective flooring

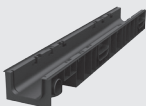
The logo for ecoteck features a stylized green leaf above the brand name 'ecoteck', which is written in a bold, italicized, green sans-serif font.

# Surface Drainage Systems

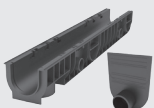
## Drainage systems Ecotek Standart DN 100



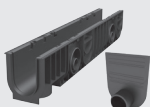
Set number	Loading class	Name	Length, mm	Width, mm	Height, mm	Weight, kg
DI 11905000 DI 02705000	A-E -	Plastic channel 100.65 h69 with plug	1010	153	69	1,6



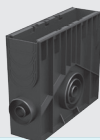
Set number	Loading class	Name	Length, mm	Width, mm	Height, mm	Weight, kg
DI 04805000	A-E	Plastic channel 100.95 h99	1010	153	99	1,7



Set number	Loading class	Name	Length, mm	Width, mm	Height, mm	Weight, kg
DI 05305000 DI 01405000	A-E -	Plastic channel 100.125 h129 with plug adapter for plastic channels	1010	153	129	2,3

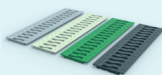


Set number	Loading class	Name	Length, mm	Width, mm	Height, mm	Weight, kg
DI 04005000 DI 01405000	A-E -	Plastic channel 100.175 h179 with plug adapter for plastic channels	1010	153	179	3,1

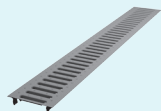


Set number	Loading class	Name	Length, mm	Width, mm	Height, mm	Weight, kg
DI 05605000	A-E	Plastic sand trap 100 h419 assembled	560	169	419	3,6

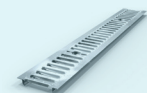
Set number	Loading class	Name	Length, mm	Width, mm	Height, mm	Weight, kg
DI 01905000	A	Plastic grate 100 Volna (metallic)	498	136	15,5	0,4
DI 01907000	A	Plastic grate 100 Volna (black)	498	136	15,5	0,4
DI 01933000	A	Plastic grate 100 Volna (ivory)	498	136	15,5	0,4
DI 01967000	A	Plastic grate 100 Volna (green fern)	498	136	15,5	0,4



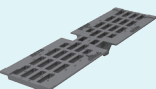
Set number	Loading class	Name	Length, mm	Width, mm	Height, mm	Weight, kg
2A995919 2A995918	A	Steel pressed grate to channels of 100 Series	998	137	22,1	1,6



Set number	Loading class	Name	Length, mm	Width, mm	Height, mm	Weight, kg
2A995948	A	Galvanized grate 100	998	137	32	2,3



Set number	Loading class	Name	Length, mm	Width, mm	Height, mm	Weight, kg
DI 06500000	A-E	Cast iron grate to channels of 100 series assembled	497	136	38	2,8



## Sets



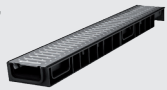
Set number	Loading class	Name	Length, mm	Width, mm	Height, mm	Weight, kg
DI 116	A-E	Stand trap 100 h419 plastic scoop collector complete with plastic grill 100 Wave	560	169	420,5	4,1



Set number	Loading class	Name	Length, mm	Width, mm	Height, mm	Weight, kg
DI 11505000	A-E	Stand trap 100 h419 plastic scraper complete with a grid of 100 cast-iron slot C250	560	169	422	5,6



Set number	Loading class	Name	Length, mm	Width, mm	Height, mm	Weight, kg
DI 12405000	A	Plastic channel Ecotekc STANDART 100.65 h69 with steel grate	1010	153	69	2,6



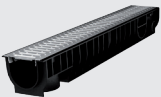
Set number	Loading class	Name	Length, mm	Width, mm	Height, mm	Weight, kg
DI 125	A	Plastic channe Ecotekc STANDART light 100.65 h69 with plastic grille	1010	153	69	3,3



Set number	Loading class	Name	Length, mm	Width, mm	Height, mm	Weight, kg
DI 12605000	B	Plastic channe Ecotekc STANDART light 100.65 h69 with galvanized welded grille	1010	153	69	3,3



Set number	Loading class	Name	Length, mm	Width, mm	Height, mm	Weight, kg
DI 12705000	C	Plastic channe STANDART light 100.65 h69 tray with a lattice 100 pig-iron	1010	153	72	7,3



Set number	Loading class	Name	Length, mm	Width, mm	Height, mm	Weight, kg
DI 11005000	A	Plastic channel Ecotekc STANDART 100.95 h99 with steel grate	1010	153	99	1,8




Set number	Loading class	Name	Length, mm	Width, mm	Height, mm	Weight, kg
DI 109	A	Plastic channel Ecotekc STANDART 100.125 h129 with plastic grate	1010	153	100,5	1,6



Set number	Loading class	Name	Length, mm	Width, mm	Height, mm	Weight, kg
DI 112	A	Plastic channel Ecotekc STANDART 100.125 h129 with plastic grate	1010	153	130,5	2,7




## Surface Drainage Systems

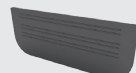


Set number	Loading class	Name	Length, mm	Width, mm	Height, mm	Weight, kg
DI 11105000	A	Plastic channel Ecotek STANDART 100.125 h129 with steel grate	1010	153	129	3,9

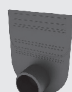
Set number	Loading class	Name	Length, mm	Width, mm	Height, mm	Weight, kg
DI 11305000	C	Plastic channel Ecotek STANDART 100.125 h129 with cast iron grate	1010	153	132	5,5
DI 011105000	-	Fixing bead for cast iron grate	117,5	10	10	0,008



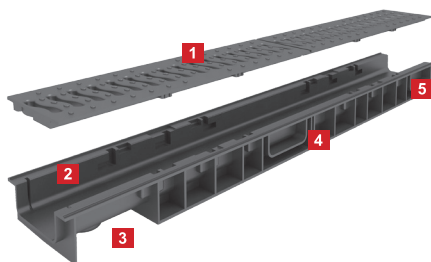

Set number	Loading class	Name	Length, mm	Width, mm	Height, mm	Weight, kg
DPKP 100PH	-	Bracing for grate of Series 100	117	28	142	0,05



Set number	Loading class	Name	Length, mm	Width, mm	Height, mm	Weight, kg
DI 02705000	-	Plug for plastic channels Standart 100.65 (black)	116	3,8	45,1	0,1



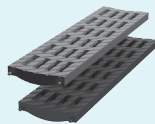
Set number	Loading class	Name	Length, mm	Width, mm	Height, mm	Weight, kg
DI 01405000	-	Plug adapter for plastic channels Standart 100.125 and 100.175 (black)	116	39,3	150,5	0,05



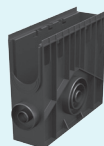
- 1) Plastic grate Volna, loading class A;
- 2) Plastic tray of Standart 100.65 h69 system;
- 3) Formed cavity for the connection of a pipe with a diameter of 50 mm;
- 4) Special groove for tray cutting;
- 5) Special groove for the connection of other trays at angel of 90°;

## Drainage systems Ecotek Medium DN 100

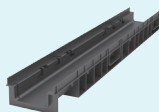
Set number	Loading class	Name	Length, mm	Width, mm	Height, mm	Weight, kg
DI 02305000	B	Plastic grate 100 MEDIUM B-125 (black)	506,1	136	30	0,9
DI 02317000	B	Plastic grate 100 MEDIUM B-125 (metallic)	506,1	136	30	0,9



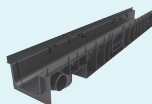
Set number	Loading class	Name	Length, mm	Width, mm	Height, mm	Weight, kg
DI 05705000	A-E	Plastic sand trap 100 h435 assembled (black)	560	153	435	4,5



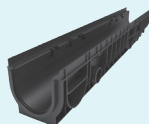
Set number	Loading class	Name	Length, mm	Width, mm	Height, mm	Weight, kg
DI 12005000	A-E	Plastic channel 100.65 h85 (black)	1010	153	85	1,6



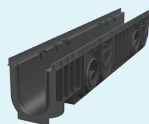
Set number	Loading class	Name	Length, mm	Width, mm	Height, mm	Weight, kg
DI 04905000	A-E	Plastic channel 100.95 h115 (black)	1010	153	115	1,8



Set number	Loading class	Name	Length, mm	Width, mm	Height, mm	Weight, kg
DI 05405000	A-E	Plastic channel 100.125 h145 (black)	1010	153	145	1,9



Set number	Loading class	Name	Length, mm	Width, mm	Height, mm	Weight, kg
DI 04105000	A-E	Plastic channel 100.175 h195 (black)	1010	153	195	3,1



## Sets

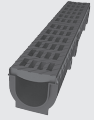


Set number	Loading class	Name	Length, mm	Width, mm	Height, mm	Weight, kg
DI 11405000	B	Plastic channel Ecotek MEDIUM 100.65 h85 with plastic grating	1010	153	85	3,6

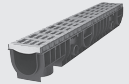
Set number	Loading class	Name	Length, mm	Width, mm	Height, mm	Weight, kg
DI 11417000	B	Plastic channel Ecotek MEDIUM 100.65 h85 with plastic grating	1010	153	85	3,6



Set number	Loading class	Name	Length, mm	Width, mm	Height, mm	Weight, kg
DI 12105000	B	Plastic channel Ecotek MEDIUM 100.125 h145 with plastic grating	1010	153	115	3,1



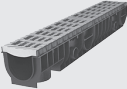
Set number	Loading class	Name	Length, mm	Width, mm	Height, mm	Weight, kg
DI 12117000	B	Plastic channel Ecotek MEDIUM 100.125 h145 with plastic grating	1010	153	115	3,1



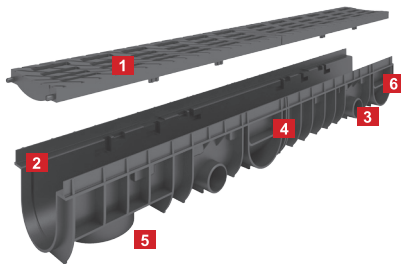
Set number	Loading class	Name	Length, mm	Width, mm	Height, mm	Weight, kg
DI 12205000	B	Plastic channel Ecotek MEDIUM 100.125 h145 with plastic grating	1010	153	145	3,1



Set number	Loading class	Name	Length, mm	Width, mm	Height, mm	Weight, kg
DI 12217000	B	Plastic channel Ecotek MEDIUM 100.125 h145 with plastic grating	1010	153	145	3,1

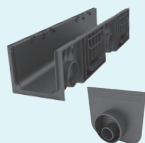


Set number	Loading class	Name	Length, mm	Width, mm	Height, mm	Weight, kg
DI 123	B	Sand trap 100 h435 plastic assembled with grille 100 MEDIUM	1010	153	115	3,1

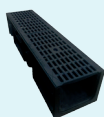


- 1) Plastic grate reinforced with carbon fiber;
- 2) Plastic channel 100.125 h145;
- 3) Formed cavity for the connection of a pipe with a diameter of 50 mm;
- 4) Special groove for tray cutting;
- 5) Formed cavity for the connection of a pipe with a diameter of 110 mm;
- 6) Special groove for the connection of other trays at an angle of 90°;

## Drainage systems Ecotek Standart DN 200



Set number	Loading class	Name	Length, mm	Width, mm	Height, mm	Weight, kg
DI 02105000	A-E	Plastic channel 200.210 h214 with plug	1012	253	214	4,2
DI 02805000	-					



Set number	Loading class	Name	Length, mm	Width, mm	Height, mm	Weight, kg
DI 09105000	A-E	Plastic channel 200.210 h214 with slatted cast iron grate, loading class C250	1012	253	214	18

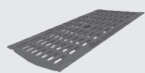
Set number	Loading class	Name	Length, mm	Width, mm	Height, mm	Weight, kg
DI 08605000	A	Plastic sand trap 200 with steel pressed grate, loading class A15	1012	253	633	11,4



Set number	Loading class	Name	Length, mm	Width, mm	Height, mm	Weight, kg
DI 08705000	A-E	Plastic sand trap 200 with slatted cast iron grate, loading class C250	1012	253	633	16,4



Set number	Loading class	Name	Length, mm	Width, mm	Height, mm	Weight, kg
2A995924	A	Steel pressed grate 200	998	241	25,5	3,2

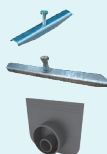


Set number	Loading class	Name	Length, mm	Width, mm	Height, mm	Weight, kg
2A995929	A-E	Grate DN200 C250	498	242	26,5	4,1

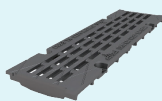


Set number	Loading class	Name	Length, mm	Width, mm	Height, mm	Weight, kg
2A995939	E	Grate DN 200 E 600	498	249	31,5	6,9

Set number	Loading class	Name	Length, mm	Width, mm	Height, mm	Weight, kg
DPKP 200HT	-	Bracing for pressed grate 200	220	42	15	0,1
DKKP 250HT	-	Bracing grate 200 C250	220	42	15	0,1
DI 02805000	-	Plug for plastic channels Standart 200 (black)	219	191,5	47,1	0,23



## Drainage system Ecotek Heavy DN 100 и DN 200



Set number	Loading class	Name	Length, mm	Width, mm	Height, mm	Weight, kg
2A995915	E	Grate DN100 E600	498	148	29,5	5,64



Set number	Loading class	Name	Length, mm	Width, mm	Height, mm	Weight, kg
DI 09205000	A-E	Plastic channel 100.65 h65 HEAVY E600 assembled	1010	153	65	1,6

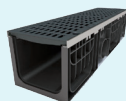


Set number	Loading class	Name	Length, mm	Width, mm	Height, mm	Weight, kg
DI 09405000	A-E	Plastic channel 100.125 h125 HEAVY E600 assembled	1010	153	125	2,3

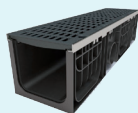


Set number	Loading class	Name	Length, mm	Width, mm	Height, mm	Weight, kg
DI 09505000	A-E	Plastic channel 100.175 h175 HEAVY E600 assembled	1010	153	175	3,0

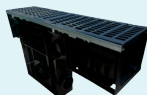
Set number	Loading class	Name	Length, mm	Width, mm	Height, mm	Weight, kg
DI 06005000	A-E	Plastic channel 200.210 h210 HEAVY 200.01 D400 assembled	1012	253	235	28



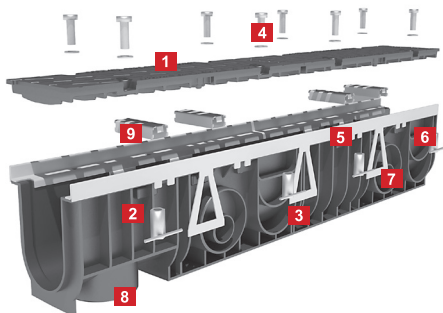
Set number	Loading class	Name	Length, mm	Width, mm	Height, mm	Weight, kg
DI 06605000	A-E	Plastic channel 200.210 h210 HEAVY 200.01 E600 assembled	1012	253	235	28



Set number	Loading class	Name	Length, mm	Width, mm	Height, mm	Weight, kg
DI 08805000	A-E	Plastic sand trap 200 with slatted cast iron grid, loading class E600	1012	253	624,6	31,6

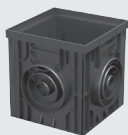




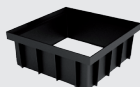


- 1) Cast-iron grate E-600;
- 2) Plastic channel 100.175 h195;
- 3) Special groove for tray cutting;
- 4) Fastening elements (bolts);
- 5) Boards with steel galvanized hooks;
- 6) Special groove for the connection of other trays at angle of 90°;
- 7) Formed cavity for the connection of a pipe with a diameter of 50 mm /110 mm;
- 8) Formed cavity for the connection of a pipe with a diameter of 110 mm ;
- 9) Fastening elements (anchor plates);

## Rain receivers, door trays



Set number	Loading class	Name	Length, mm	Width, mm	Height, mm	Weight, kg
DI 03405000	B	Plastic catch basin 300x300 (black)	317,9	317,9	296	2



Set number	Loading class	Name	Length, mm	Width, mm	Height, mm	Weight, kg
DI 01805000	B	Catch basin buildup 300x300 (black)	286	286	122	0,5

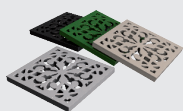


Set number	Loading class	Name	Length, mm	Width, mm	Height, mm	Weight, kg
DI 05005000	-	Catch basin basket with handle (black)	238	150	155	0,3

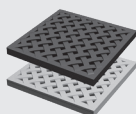
## Surface Drainage Systems



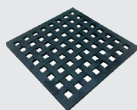
Set number	Loading class	Name	Length, mm	Width, mm	Height, mm	Weight, kg
DI 03505000	-	Intercepting baffle plate for catch basin 300x300 (black)	247,5	44,5	243	0,2



Set number	Loading class	Name	Length, mm	Width, mm	Height, mm	Weight, kg
DI 02405000	A	Plastic decorative grid for catch basin (metallic)	278,6	278,6	30	0,6
DI 02417000	A	Plastic decorative grid for catch basin (black)	278,6	278,6	30	0,6
DI 02433000	A	Plastic decorative grid for catch basin (ivory)	278,6	278,6	30	0,6
DI 02467000	A	Plastic decorative grid for catch basin (green fern)	278,6	278,6	30	0,6



Set number	Loading class	Name	Length, mm	Width, mm	Height, mm	Weight, kg
DI 02505000	B	Plastic reinforced grid for catch basin (black)	278,6	278,6	32	1,1
DI 02517000	A	Plastic reinforced grid for catch basin (metallic)	278,6	278,6	32	1,1



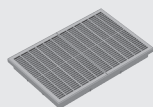
Set number	Loading class	Name	Length, mm	Width, mm	Height, mm	Weight, kg
2A998857	B	Grid for catch basin 338 (4 kg)	280	280	22	1,1



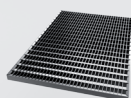
Set number	Loading class	Name	Length, mm	Width, mm	Height, mm	Weight, kg
DI 01205000	-	Storm water inlet plastic 300x300 assembly (black)	317,9	317,9	296	2



Set number	Loading class	Name	Length, mm	Width, mm	Height, mm	Weight, kg
DI 02605000	A	Entrance tray 600x400 (black)	392	300	20	1,2



Set number	Loading class	Name	Length, mm	Width, mm	Height, mm	Weight, kg
DI 03005000	A	Plastic tray grid (black)	392	300	20	0,8



Set number	Loading class	Name	Length, mm	Width, mm	Height, mm	Weight, kg
P9PH001	A	Walkway 33x11 20x2 390x590	590	390	20	5



Set number	Loading class	Name	Length, mm	Width, mm	Height, mm	Weight, kg
DI 00605000	A	Manhole cover 315 (black)	388,5	388,5	56,1	1,9



Set number	Loading class	Name	Length, mm	Width, mm	Height, mm	Weight, kg
DI 00305000	A	Drywell cover 315 (black)	345	345	94	0,7



Set number	Loading class	Name	Length, mm	Width, mm	Height, mm	Weight, kg
DI 00405000	A	Drywell cover 425 (black)	469,5	469,5	140,5	1,4



Set number	Loading class	Name	Length, mm	Width, mm	Height, mm	Weight, kg
DI 12917000	-	Street gangway Ecoteck (metallic)	302,9	169,5	324,5	0,58



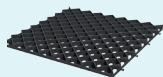
Set number	Loading class	Name	Length, mm	Width, mm	Height, mm	Weight, kg
DI 12905000	-	Street gangway Ecoteck (black)	302,9	169,5	324,5	0,58



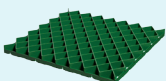
Set number	Loading class	Name	Length, mm	Width, mm	Height, mm	Weight, kg
DI 12959000	-	Street gangway Ecoteck (terracotta)	302,9	169,5	324,5	0,58



## Lawn grates



Set number	Loading class	Name	Length, mm	Width, mm	Height, mm	Weight, kg
AC 09805000	more than 200 tons per m <sup>2</sup>	Grass grid EcoteckParking (black)	593,4	593,4	44,4	1,85



Set number	Loading class	Name	Length, mm	Width, mm	Height, mm	Weight, kg
AC 09813100	more than 200 tons per m <sup>2</sup>	Grass grid EcoteckParking (green)	593,4	593,4	44,4	1,85



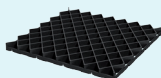


Set number	Loading class	Name	Length, mm	Width, mm	Height, mm	Weight, kg
AC 09905100	up to 200 tons per m <sup>2</sup>	Grass grid Ecotek Green (black)	641,2	293,4	37,9	1,1

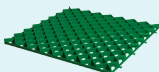


Set number	Loading class	Name	Length, mm	Width, mm	Height, mm	Weight, kg
AC 09913100	up to 200 tons per m <sup>2</sup>	Grass grid Ecotek Green (green)	641,2	293,4	37,9	1,1

Set number	Loading class	Name	Length, mm	Width, mm	Height, mm	Weight, kg
AC 01205100	more than 200 tons per m <sup>2</sup>	Grass grid EcotekParking M (black)	838,4	838,4	42,4	3.0



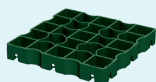
Set number	Loading class	Name	Length, mm	Width, mm	Height, mm	Weight, kg
AC 01213100	more than 200 tons per m <sup>2</sup>	Grass grid EcotekParking M (green)	838,4	838,4	42,4	3.0



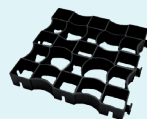
Set number	Loading class	Name	Length, mm	Width, mm	Height, mm	Weight, kg
AC 10600002	-	Anchor pin (for grass grids)	79,7	61,6	255,4	-



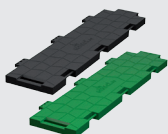
Set number	Loading class	Name	Length, mm	Width, mm	Height, mm	Weight, kg
AC 09713500	more than 300 tons per m <sup>2</sup>	Grass grid Ecotek Maneg (green)	333,8	333,8	47,9	1



Set number	Loading class	Name	Length, mm	Width, mm	Height, mm	Weight, kg
AC 09705400	more than 300 tons per m <sup>2</sup>	Grass grid Ecotek Maneg (black)	333,8	333,8	47,9	1

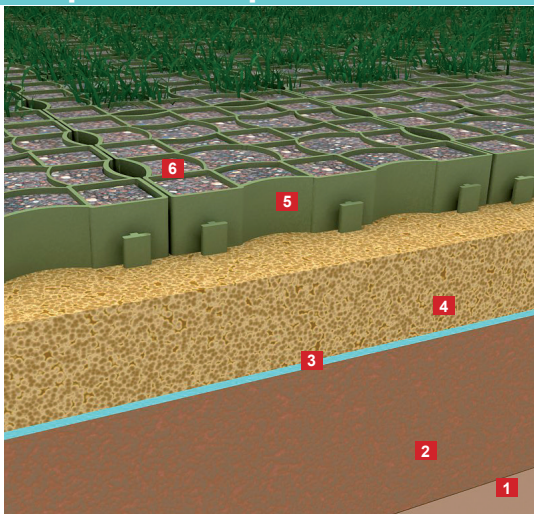


## Ecotek Ice Cover



Set number	Loading class	Name	Length, mm	Width, mm	Height, mm	Weight, kg
AC 01105000	up to 160 tons per m <sup>2</sup>	Modular plastic protective surface Ecotek Ice Cover (black, green, gray, metallic)	617,5	154,9	23,3	0,685
AC 01113000						
AC 01117000						
AC 01117200						

## Sports and protective coatings



- 1) Smoothed earth fundament.
- 2) Supporting layer (gravel and soil material 40 cm thick, 2/3 of which consist of a mixture of hard rock with particles of 2-32 mm / 2-45 mm and topsoil).
- 3) Geotextiles – is a synthetic waterproof fabric that prevent form gravel and rubble levels mixing.
- 4) Sub-base 3-5cm thick made, for example, from a mixture of gravel and substrate (80% of gravel with particles of 2-8 mm and 20% of topsoil).
- 5) Grate «Ekotek-Maneg» with backfilling of a mixture (for example, of loose topsoil with sand. 50% of the amount shall be sand with large particles of 2-4mm.).
- 6) Backfilling to the upper edge of the grate.

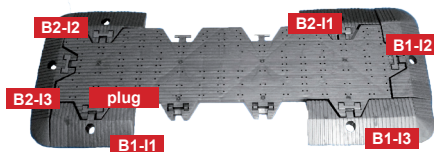
### Ecotek Arena

Set number	Loading class	Name	Length, mm	Width, mm	Height, mm	Weight, kg
AC 15705500	more than 160 tons per m <sup>2</sup>	Modular plastic protective surface for natural grass lawn Ecotek Arena (black, transparent)	918,7	226,2	35,2	2
AC 15700000						



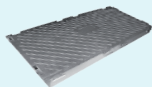
## Modular sports coatings

Type of module of Ecotek Arena protective coating with boards and caps



- B1-I1 Board Ecotek Arena
- B2-I1 Board Ecotek Arena
- B1-I2 Board Ecotek Arena
- B1-I3 Board Ecotek Arena
- B2-I2 Board Ecotek Arena
- B2-I3 Board Ecotek Arena
- Plug Plug for Ecotek Arena

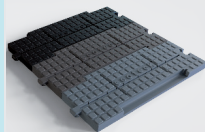
### Ecotek Heat Ice



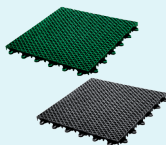
Set number	Loading class	Name	Length, mm	Width, mm	Height, mm	Weight, kg
AC 19117200	up to 190 tons per m <sup>2</sup>	Modular plastic protective surface for ice arenas Ecotek HEAT ICE (metallic)	612,7	302,3	54,7	2,4

### Ecotek Event

Set number	Loading class	Name	Length, mm	Width, mm	Height, mm	Weight, kg
AC 18717200						
AC 18713200						
AC 18700002	up to 39 tons per m <sup>2</sup>	Protective surfacing for synthetic grass Ecotek (metallic, green, transparent, red, gray, brown, blau)	306	102	18,2	0,11
AC 18786000						
AC 18717200						
AC 18745000						
AC 18729000						

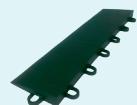


### Ecotek Sport

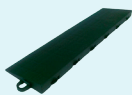


Set number	Loading class	Name	Length, mm	Width, mm	Height, mm	Weight, kg
AC 16813300						
AC 16816400	more than 73 tons per m <sup>2</sup>	Modular sports surfacing Ecotek Sport (green, brown, gray, blau)	304,9	304,9	16	0,3
AC 16886000						
AC 16829200						





AC  
16905300



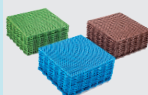
ДИ  
19005300



AC  
17005000

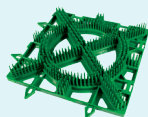
## Versatile floor covering

Set number	Loading class	Name	Length, mm	Width, mm	Height, mm	Weight, kg
AC 41013000						
AC 41016000	more than 39 tons per m <sup>2</sup>	Ecotek Universal Plastic Floor Coating (green, brown, gray, blue)	304,9	304,9	16	2,83
AC 41086000						
AC 41029000						



## Ecotek Snow

NEW



Set number	Loading class	Name	Length, mm	Width, mm	Height, mm	Weight, kg
AC 56813000						
AC 56827000	-	Ecotek Snow Coating (green, red, transparent)	223,5	223,5	31,9	0,199
AC 56800000						



## Modules Ecotek Event

Set number	Loading class	Name	Length, mm	Width, mm	Height, mm	Weight, kg
AC 596	up to 39 tons per m <sup>2</sup>	Module end 1 Event	102	39,5	17	0,02
AC 711	up to 39 tons per m <sup>2</sup>	Module end 2 Event	102	54,5	17	0,02
AC 597	up to 39 tons per m <sup>2</sup>	Side Event Module 1	306	54,5	17	0,06
AC 712	up to 39 tons per m <sup>2</sup>	Side Event Module 2	306	39,5	17	0,05





27 K. Marx street,  
Bobruisk,  
Mogilev region,  
213826, Belarus  
+375 22 575 08 38  
+375 44 765 05 62  
info@ecoteck.by  
www.ecoteck.by

  
www.ecoteck.by